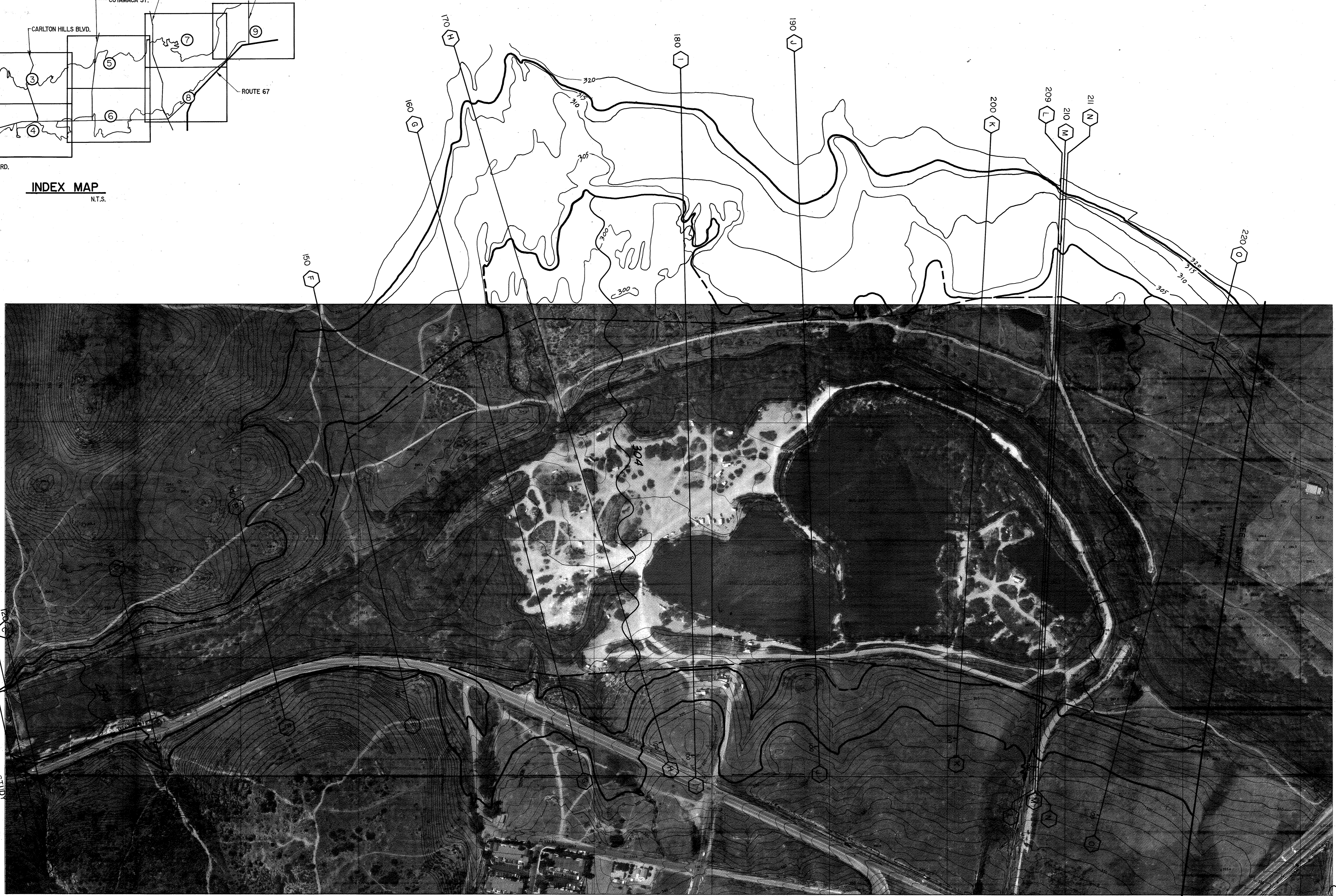
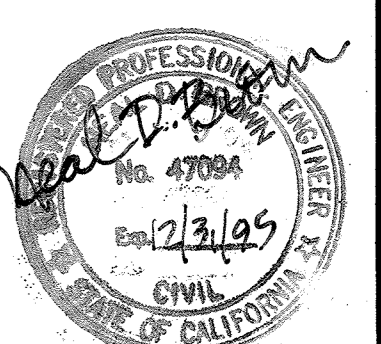
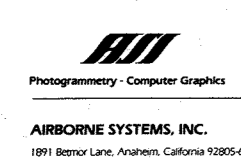


INDEX MAP  
N.T.S.

- LEGEND**
- FLOODWAY
  - 100 YEAR FLOODPLAIN
  - 500 YEAR FLOODPLAIN
  - 327 BASE FLOOD ELEVATION (100 YR. FLOOD)
  - CROSS SECTION NUMBER
  - 566 BY 100 REFERENCE DISTANCE ALONG SECTION
  - CROSS SECTION ALPHA IDENTIFIER



110 B  
100 A  
DOWNSTREAM LIMIT OF STUDY



MAP COMPLETED, JULY 8, 1992 BY BSI CONSULTANTS INC. W.O. No. S92-01

<b>CONSTRUCTION RECORD</b>		<b>REFERENCES</b>		<b>Date</b>	<b>By</b>	<b>REVISIONS</b>		<b>App'd</b>	<b>BENCH MARK</b>		<b>SCALE</b>	<b>Office</b>	<b>Designed By</b>	<b>Drawn By</b>	<b>Checked By</b>	<b>Submitted</b>	<b>Approved</b>	<b>CITY OF SANTEE</b>	<b>ENGINEERING DEPARTMENT</b>	<b>Drawing No.</b>
Contractor _____									COMPILED BY PHOTOGRAMMETRIC METHODS FROM PHOTOGRAPHY DATED APRIL 22, 1989. HORIZONTAL & VERTICAL CONTROL IS BASED ON R.O.S. 11252		Horizontal 1"=200' Vertical	Field	NB	JD	RCS	8-7-92	8-10-92	SAN DIEGO RIVER FLOOD STUDY FEMA DISCHARGE RATES		92-173
Inspector _____												Traffic	Plans Prepared Under Supervision Of	CSH	CSH	CSH	CSH			Sheet 1 of 9
Date Completed _____													R.C.E. No. 43212	Expire 3-31-96	Expire 3-31-96	Expire 3-31-96				



**BSI**  
 Photogrammetry, Computer Graphics  
 AIRBORNE SYSTEMS, INC.  
 881 BERRY LANE, NORTH CANTON, MASSACHUSETTS 01863

Professional Engineer  
 No. 47084  
 Exp. 12/31/99  
 CIVIL  
 STATE OF CALIFORNIA

MAP COMPLETED JULY 8, 1992 BY BSI CONSULTANTS INC. W.O. No. S92-01

CONSTRUCTION RECORD		REFERENCES		Date	By	REVISIONS		App'd	BENCH MARK		SCALE		Office	Designed By	Drawn By	Checked By	Submitted	Approved	CITY OF SANTEE ENGINEERING DEPARTMENT		Drawing No.
Contractor									COMPILED BY PHOTOGRAMMETRIC METHODS FROM PHOTOGRAPHY DATED APRIL 22, 1989.		Horizontal 1"=200'		Field	N.B.	J.D.	R.C.S.	8-7-92	8-10-92	SAN DIEGO RIVER FLOOD STUDY		92-174
Inspector									HORIZONTAL & VERTICAL CONTROL IS BASED ON R.O.S. 11252		Vertical		Traffic	Plans Prepared Under Supervision Of	Date	8-4-92	By	ASST. DIRECTOR OF PUBLIC WORKS	FEMA DISCHARGE RATES		Sheet 2 of 9
Date Completed														R.C.E. No. 43212	Expires	3-31-96		R.G.E. No. 12725	Expires	3-31-93	



AEROSPACE SYSTEMS, INC.  
 6811 BROADWAY, SUITE 200, SAN DIEGO, CA 92121

SEE SHEET 4

MAP COMPLETED JULY 8, 1992 BY BSI CONSULTANTS INC. W.O. No. S92-01

<b>CONSTRUCTION RECORD</b>		<b>REFERENCES</b>		<b>Date</b>	<b>By</b>	<b>REVISIONS</b>		<b>App'd</b>	<b>BENCH MARK</b>		<b>SCALE</b>	<b>Office</b>	<b>Designed By</b>	<b>Drawn By</b>	<b>Checked By</b>	<b>Submitted</b>	<b>Approved</b>	<b>CITY OF SANTEE ENGINEERING DEPARTMENT</b>		<b>Drawing No.</b>
Contractor _____									COMPILED BY PHOTOGRAMMETRIC METHODS FROM PHOTOGRAPHY DATED APRIL 22, 1989.		<b>Horizontal</b>	<b>Field</b>	<b>NB</b>	<b>JD</b>	<b>RCS</b>	<b>8-7-92</b>	<b>9-10-92</b>	<b>SAN DIEGO RIVER FLOOD STUDY FEMA DISCHARGE RATES</b>		<b>92-175</b>
Inspector _____									HORIZONTAL & VERTICAL CONTROL IS BASED ON R.O.S. 11252		<b>Vertical</b>	<b>Traffic</b>	<b>Plans Prepared Under Supervision Of</b>	<b>Date</b>	<b>Expires</b>	<b>By</b>	<b>By</b>			<b>Sheet 3 of 9</b>
Date Completed _____													<b>R.C.E. No. 43212</b>	<b>8-4-92</b>	<b>3-31-96</b>	<b>By</b>	<b>By</b>			
													<b>SENIOR CIVIL ENGINEER</b>	<b>8-4-92</b>	<b>3-31-96</b>	<b>By</b>	<b>By</b>			
																<b>SENIOR CIVIL ENGINEER</b>	<b>SENIOR CIVIL ENGINEER</b>			
																<b>R.C.E. No. 12725</b>	<b>R.C.E. No. 12725</b>			







SEE SHEET 6

AIRBORNE SYSTEMS, INC.  
10000 AIRBORNE DRIVE, SAN DIEGO, CA 92126

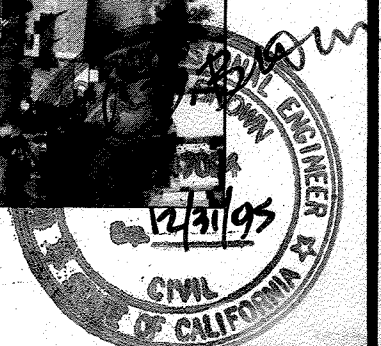
MAP COMPLETED JULY 8, 1992 BY BSI CONSULTANTS INC. W.O. No. 592-01

<b>CONSTRUCTION RECORD</b>		<b>REFERENCES</b>		<b>Date</b>	<b>By</b>	<b>REVISIONS</b>		<b>App'd</b>	<b>BENCH MARK</b>			<b>SCALE</b>	<b>Office</b>	<b>Designed By</b>	<b>Drawn By</b>	<b>Checked By</b>	<b>Submitted</b> 8-7-92		<b>Approved</b> 8-10-92		<b>CITY OF SANTEE ENGINEERING DEPARTMENT</b>		<b>Drawing No.</b>
Contractor _____		_____		_____	_____	_____		_____	COMPILED BY PHOTOGRAMMETRIC METHODS FROM PHOTOGRAPHY DATED APRIL 22, 1989.			Horizontal	Field	NB	JD	RCS	By <i>Craig M. Hough</i> SENIOR CIVIL ENGINEER		By <i>James P. Weston</i> ASST. DIRECTOR OF PUBLIC WORKS		SAN DIEGO RIVER FLOOD STUDY FEMA DISCHARGE RATES		92-177
Inspector _____		_____		_____	_____	_____		_____	HORIZONTAL & VERTICAL CONTROL IS BASED ON R.O.S. 11252			Vertical	Traffic	Plans Prepared Under Supervision Of	Date	8-4-92	R.C.E. No. 43212 Expires 3-31-96		R.C.E. No. 12725 Expires 2-31-93				Sheet 5 of 9
Date Completed _____		_____		_____	_____	_____		_____															





**AI**  
Photogrammetry - Computer Graphics  
AEROSPACE SYSTEMS, INC.  
1801 Serrano Lane, Anaheim, California 92806



<b>CONSTRUCTION RECORD</b>		<b>REFERENCES</b>		<b>Date</b>	<b>By</b>	<b>REVISIONS</b>		<b>App'd</b>	<b>BENCH MARK</b>		<b>SCALE</b>	<b>Office</b>	<b>Designed By</b>	<b>Drawn By</b>	<b>Checked By</b>	<b>Submitted 8-7-92</b>		<b>Approved 8-10-92</b>		<b>CITY OF SANTEE ENGINEERING DEPARTMENT</b>		<b>Drawing No.</b>
Contractor									COMPILED BY PHOTOGAMMETRIC METHODS FROM PHOTOGRAPHY DATED APRIL 22, 1989.		Horizontal 1"=200'	Field	NB	JD	RCS	Plans Prepared Under Supervision Of		By <i>Craig M. Stimpke</i>		<b>SAN DIEGO RIVER FLOOD STUDY FEMA DISCHARGE RATES</b>		<b>92-178</b>
Inspector									HORIZONTAL & VERTICAL CONTROL IS BASED ON R.O.S. 11282		Vertical	Traffic				R.C.E. No. 43212		ASST. DIRECTOR OF PUBLIC WORKS		Sheet 6 of 9		
Date Completed																Expires 3-31-96		R.C.E. No. 12725		Expires 3-31-93		

MAP COMPLETED JULY 8, 1992 BY BSI CONSULTANTS INC. W.O. No. S92-01



SEE SHEET 5

SEE SHEET 8

MAP COMPLETED JULY 8, 1992 BY BSI CONSULTANTS INC. W.O. No. S92-01

<b>CONSTRUCTION RECORD</b>		<b>REFERENCES</b>		<b>Date</b>	<b>By</b>	<b>REVISIONS</b>		<b>App'd</b>	<b>BENCH MARK</b>		<b>SCALE</b>	<b>Office</b>	<b>Designed By</b>	<b>Drawn By</b>	<b>Checked By</b>	<b>Submitted</b>	<b>Approved</b>	<b>CITY OF SANTEE ENGINEERING DEPARTMENT</b>		<b>Drawing No.</b>
Contractor									COMPILED BY PHOTOGAMMETRIC METHODS FROM PHOTOGRAPHY DATED APRIL 22, 1989. HORIZONTAL & VERTICAL CONTROL IS BASED ON R.O.S. 11252		Horizontal 1"=200'		N.B.	J.D.	R.C.S.	8-7-92	8-10-92	<b>SAN DIEGO RIVER FLOOD STUDY FEMA DISCHARGE RATES</b>		<b>92-179</b>
Inspector											Vertical	Field	Prepared Under Supervision Of	Date	8-4-92					Sheet 7 of 9
Date Completed												Traffic	R.C.E. No.	43212	Expires	3-31-96				





AREA SUBJECT TO FLOODING DURING HIGH FLOW CONDITIONS

SEE SHEET 5

SEE SHEET 6

*Neal D. Brown*  
4/2/92

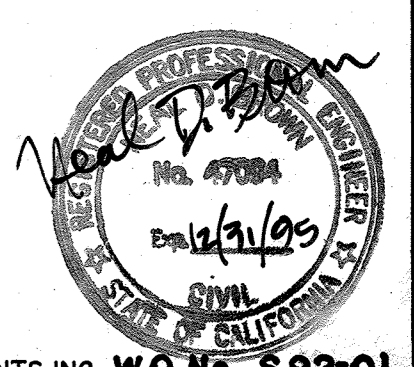
MAP COMPLETED JULY 8, 1992 BY BSI CONSULTANTS INC. W.O. No. 92-01

CONSTRUCTION RECORD		REFERENCES		Date	By	REVISIONS	App'd	BENCH MARK		SCALE	Office	Designed By	Drawn By	Checked By	Submitted	Approved	CITY OF SANTEE ENGINEERING DEPARTMENT		Drawing No.
Contractor								COMPILED BY PHOTOGRAMMETRIC METHODS FROM PHOTOGRAPHY DATED APRIL 22, 1989.		Horizontal	Field	N.B.	J.D.	R.C.S.			SAN DIEGO RIVER FLOOD STUDY FEMA DISCHARGE RATES		92-180
Inspector								HORIZONTAL & VERTICAL CONTROL IS BASED ON R.O.S. 11252		Vertical	Traffic	Plans Prepared	Under Supervision Of	Date	By	By			Sheet 8 of 9
Date Completed												R.C.E. No. 43212	Expires 3-31-96	8-4-92	SENIOR CIVIL ENGINEER	ASST. DIRECTOR OF PUBLIC WORKS			





**AI**  
 PHOTOGRAMMETRIC SYSTEMS, INC.  
 10700 SAN DIEGO AVENUE, SAN DIEGO, CALIF. 92121



MAP COMPLETED JULY 8, 1992 BY BSI CONSULTANTS INC. W.O. No. 892-01

<b>CONSTRUCTION RECORD</b>		<b>REFERENCES</b>		<b>Date</b>	<b>By</b>	<b>REVISIONS</b>		<b>Appd</b>	<b>BENCH MARK</b>		<b>SCALE</b>	<b>Office</b>	<b>Designed By</b>	<b>Drawn By</b>	<b>Checked By</b>	<b>Submitted</b>	<b>Approved</b>	<b>CITY OF SANTEE ENGINEERING DEPARTMENT</b>		<b>Drawing No.</b>
Contractor									COMPILED BY PHOTOGRAMMETRIC METHODS FROM PHOTOGRAPHY DATED APRIL 22, 1989. HORIZONTAL & VERTICAL CONTROL IS BASED ON R.O.S. 11282		Horizontal 1"=200' Vertical	Field	N.B.	J.D.	R.C.S.	8-7-92	8-10-92	SAN DIEGO RIVER FLOOD STUDY FEMA DISCHARGE RATES		92-181
Date Completed												Traffic	By <i>Craig M. Stangor</i>	By <i>Dennis O. [Name]</i>				ASST. DIRECTOR OF PUBLIC WORKS		Sheet 9 of 9
													R.C.E. No. 43212	Expires 3-31-96				R.C.E. No. 12723 Expires 2-31-95		